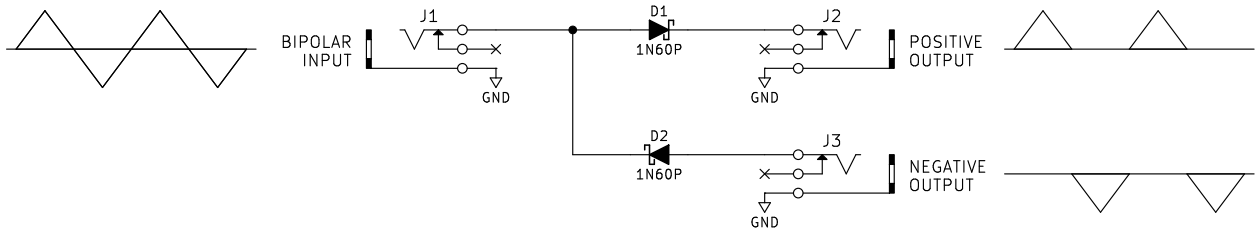
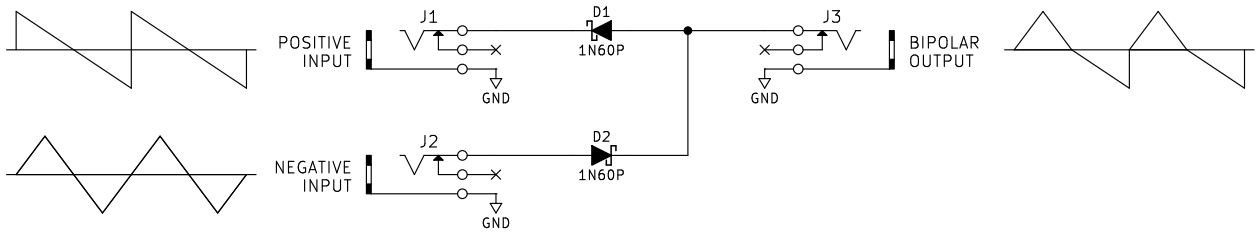


Half Wave Rectifier

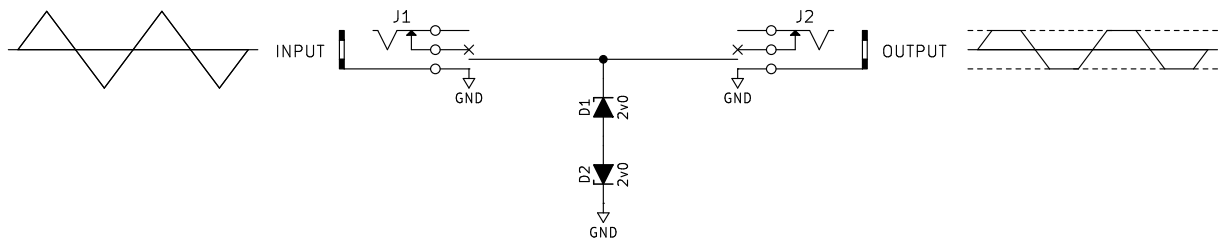


Or swap the inputs for the outputs

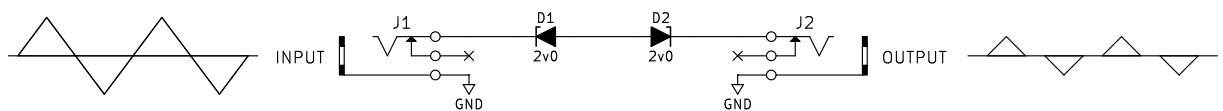


No current limiting resistors
Use Schottky diodes (but 1N4148 will work)

Clipper



Anti-Clipper



No current limiting resistors
Use Zener diodes, for example 2v0 to set the clipping threshold which for a 2v0 Zener will be $2V + 0.7V = 2.7V$

* Un! Title: Passive Diode Circuits I

Here are some very simple passive diode applications. Half Wave Rectifiers are particularly useful for merging or splitting signals
Check out AMZ-FX for more diode based circuits: www.musique.com/lab/main.htm